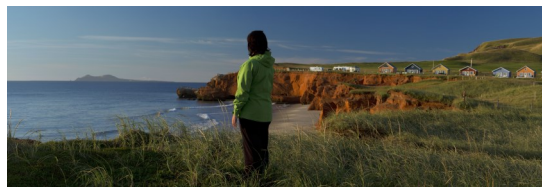




40
sentinels along the
Lighthouse Trail



13
species of whales



116,000
northern gannets on
Bonaventure Island



What's New - Spring 2018

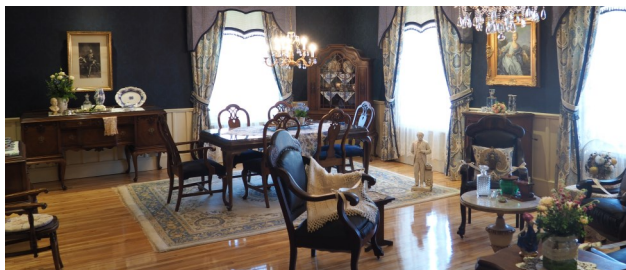
Québec by the Sea: Bas-Saint-Laurent, Gaspésie, Côte-Nord, Îles de la Madeleine



What to See

Ooh!

© Musée régional de Kamouraska



Musée régional de Kamouraska

Bas-Saint-Laurent

Open from May to October, the Musée régional de Kamouraska invites you to plunge into the history of this village through exhibits about life in the olden days, farming, eel fishing and life in a resort town. To find out more, you can also enjoy a 1-hour guided tour of the village. Bus parking is also available.

Nova Lumina

Gaspésie

Nova Lumina is now being offered by Parc du Bourg de Pabos. Available from late June to early October, this multi-media night walk invites you to enjoy the 1.5-km (1-mi.) journey at your own pace, with surprises along the way!

Reford Gardens

Gaspésie

In June, a new permanent exhibit about the life and era of Elsie Reford will be presented in the 13 rooms of Estevan Lodge. Recognized for her gardens, Reford also had many other interests, including politics, women's health, art and international affairs. Her involvement in these issues led her to meet many of the leading figures of her day. For the first time, new facets of this fascinating woman will be revealed during this exhibit. A visit to the exhibit is also a perfect opportunity to discover the new gardens during the [International Garden Festival](#).

Exploramer

Gaspésie

A new exhibit at Exploramer, *The Birds and the Sea*, presents four habitats and the birds that are found in them. Don't miss the virtual bird-watching station where you can observe the seabirds of the St. Lawrence thanks to augmented reality technology!

Musée de la Gaspésie

Gaspésie

The Musée de la Gaspésie has launched a new permanent multimedia exhibit called *The Deep Blue Sea*, which will complement the existing exhibit about the *Gaspésienne no 20* fishing boat. Another new exhibit will also open this summer and will feature objects and documents belonging to Mary Rose-Anna Bolduc (known as “Madame Bolduc” or “La Bolduc”), one of Québec’s leading folk music pioneers.

5M: Museums of Gaspésie

Gaspésie

Portraits are coming to life in the 5M, five museums in Gaspésie that have united to offer a unique experience to visitors. Historical characters will come to life on screens that are hidden within works of art. They will tell visitors their story while leaping from one work of art to the next, much like the moving portraits in the *Harry Potter* books! *Living Portraits* is five local characters in five museums: discover a new world!

Yum-yum!

Where to Eat



La Maison du Pêcheur

Gaspésie

La Maison du Pêcheur restaurant has a new address, since the building has been moved. Enjoy the new terrace seating 40 people, which is open for lunch or drinks in the evening. The lunch menu is also being updated, to improve service speed.

St-Panrace Microbrewery

Côte-Nord

Go on a guided tour of the St-Panrace microbrewery in Baie-Comeau, Côte-Nord’s first microbrewery. Find out about the brewing process, fermentation methods and bottling of northern beers. Tours are at least 45 minutes long and are offered in English or French. Be sure to visit the gift shop and tasting room. Bus parking is also available.



© Mathieu Dupuis

Yippee!

What to Do



Cime Aventure

Gaspésie

The new aerial park at Cime Aventures includes 26 challenges on three storeys as well as two 150-metre (490-foot) ziplines: a fun and thrilling experience for visitors of all ages!

Explos-Nature

Côte-Nord

From May to October, learn the basics of scuba diving or upgrade your skills with the Explos-Nature diving school in a pool, lake or the St. Lawrence River. This activity is available upon reservation only.



© Explos-Nature

New!

Pêche Sportive Baie-des-Chaleurs

Gaspésie



Accompanied by a guide, individual clients can try fishing for plaice, mackerel or striped bass in Chaleur Bay. Atlantic salmon fishing is also offered in the crystal-clear Bonaventure River.

These activities are available from early June to late October, upon reservation.

CTMA Cruises

Îles de la Madeleine

This summer, discover the Îles de la Madeleine from another angle with a CTMA theme cruise. You can opt for a classic cruise with a package (Flavours, Art & Culture or Cycling) or a theme cruise. This year, CTMA offers five theme cruises: Gourmet Québec, Maritime Delicacies, Wine & Gourmet Delights, Treasures of the St. Lawrence and Madelinot Immersion. Cruises depart from Montréal every week.

Parc Nature de Pointe-aux-Outardes

Côte-Nord

This summer, enjoy a stay in one of the 5 birdhouses in the nature park. Each of these glamping cottages is inspired by a different species of bird found in the park. Renovations are also planned this spring for the main building and the washroom facilities.

Éole Cap-Chat

Gaspésie

Two new activities are available at Éole Cap-Chat. In addition to the usual tour of the wind farm, you can now admire sunsets or the night stars from the top of a wind turbine. These activities are available from June to October, upon reservation.

Percé Geopark

Gaspésie



Since 2017, the Percé Geopark has offered adrenaline junkies a new activity: ziplining! The 220-metre (720-feet) zipline is up to 100 metres (330 feet) above the ground and reaches a speed of 50 km/h (30 mph). The departure point is right next to the suspended glass platform on Mt. Sainte-Anne. The geopark has also recently been recognized as a UNESCO Global Geopark!

Where to See Wildlife

WOW!

Croisières AML (cruises)

Côte-Nord



Croisières AML now offers the opportunity to observe the marine mammals of the St. Lawrence aboard a new generation of Zodiacs accommodating 60 passengers, with departures from Tadoussac. While minimizing environmental impact, the new vessels will also offer more space and comfort as well as improved service, with the addition of a naturalist guide on board. Whale-watching cruises are also offered from the south shore of the St. Lawrence, departing from Rivière-du-Loup.



Parc national du Bic

Bas-Saint-Laurent

Parc national du Bic now offers new lodging options in the Tombolo sector. The EXP cabins, which can accommodate up to 4 people each, are designed so that you will feel immersed in nature. The Étoile “ready-to-camp” sites, an alternative to the traditional “ready-to-camp” tents, offer added amenities for up to 6 people per unit. Finally, the Echo cabins, which can accommodate up to 4 people each, are located in the heart of the forest. These types of cabins are also available in [Parc national du Fjord-du-Saguenay](#).

All cabins are equipped with the amenities mentioned in the [Stay in a Cabin](#) section of the Sépaq website.

Hostellerie Baie Bleue

Gaspésie

Hostellerie Baie Bleue is expanding, with the acquisition of a motel and 6 cottages, increasing their number of units to 120 to satisfy all types of guests.

Pub St-Joseph is also expanding: as of June 2018, there will be seating for an additional 50 people indoors (for a total of 120), as well as a new terrace upstairs seating 50.

Hôtel-Motel Fleur de Lys

Gaspésie



Located in the middle of the village of Percé, Hôtel-Motel Fleur de Lys offers 31 rooms, including several with a view of Percé Rock. You can also dine on site at the La Morutière restaurant, which seats 60 indoors and 30 outdoors.

© Kenneth Cahill / Hôtel-Motel Fleur de Lys

80 new rooms at
**Hôtel Universel
de Rivière-du-
Loup**

Bas-Saint-Laurent

Sépaq naturalist guides
are available (\$) for
your FIT clients
and groups!

What You Need To Know

Extend your road trips by taking a ferry to cross the St. Lawrence or visit the Îles de la Madeleine, the Lower North Shore or one of the many islands in the Estuary and Gulf of St. Lawrence. To find out more, visit our [ferries](#) page.

Contact Us

Zoé Ross-Lévesque

Étienne Fiola

